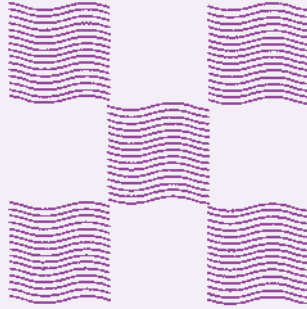


同志社社会学研究

「第 18 号」



2014 年 3 月

● 研究論文

Early Evidence, Challenges and Their Practice Implications
in Disaster Counter-measures for People with Special Needs
Following the 2011 Eastern Japan Earthquake

立木 茂雄

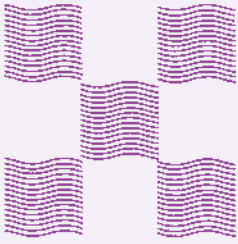
厳罰意識の構造

西岡 暁廣

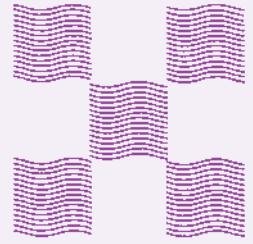
● セミナー

研究資料の検索と収集の基礎

山本 圭三
張 暁霖
猿渡 壮



ISSN 1342-9833



Doshisha Review of Sociology

No. 18 March 2014

CONTENTS

● ARTICLES

Early Evidence, Challenges and Their Practice Implications
in Disaster Counter-measures for People with Special Needs
Following the 2011 Eastern Japan Earthquake

TATSUKI Shigeo

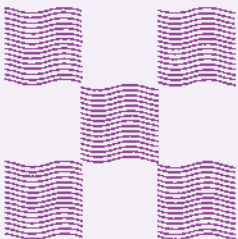
A Study of People Who Demand Severe Punishment for Crimes

NISHIOKA Akihiro

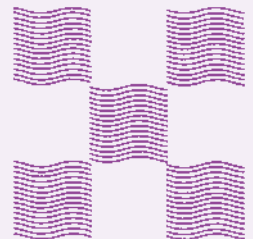
● SEMINAR

An Introduction to Searching for Literatures
and Survey Data for Sociological Study

YAMAMOTO Keizo
ZHANG Xiaolin
SARUWATARI Takeshi



Doshisha Sociological Association



同志社社会学研究

NO. 18, 2014

<目次>

●研究論文

Early Evidence, Challenges and Their Practice Implications
in Disaster Counter-measures for People with Special Needs
Following the 2011 Eastern Japan Earthquake 立木 茂雄 1

厳罰意識の構造 西岡 暁廣 11

●セミナー

研究資料の検索と収集の基礎 山本 圭三 27
張 暁霖
猿渡 壮

社会学専攻大学院生 業績・略歴一覧 39

2013年度博士論文・修士論文題目 53

執筆者紹介 54

『同志社社会学研究』編集規定

研究室だより